

# BC1103-2

3 MP Intelligent IP box camera / Caméra box IP 3 MP intelligente

## Quick Start Guide / Guide rapide



Find additional manuals, the datasheet, the EU Declaration of Conformity and the latest firmware for this product at:

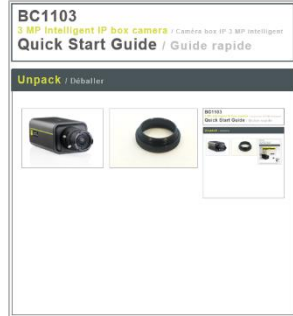
<http://www.tkhsecurity.com/support-files>

Plus d'information sur le site ci-dessus.

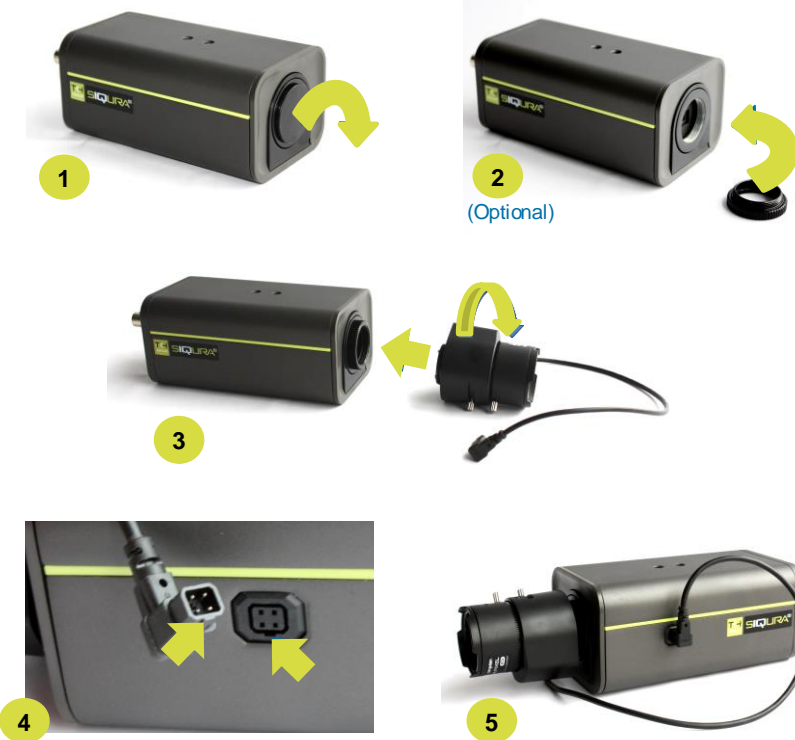


# SECURITY SOLUTIONS

### Unpack / Déballer



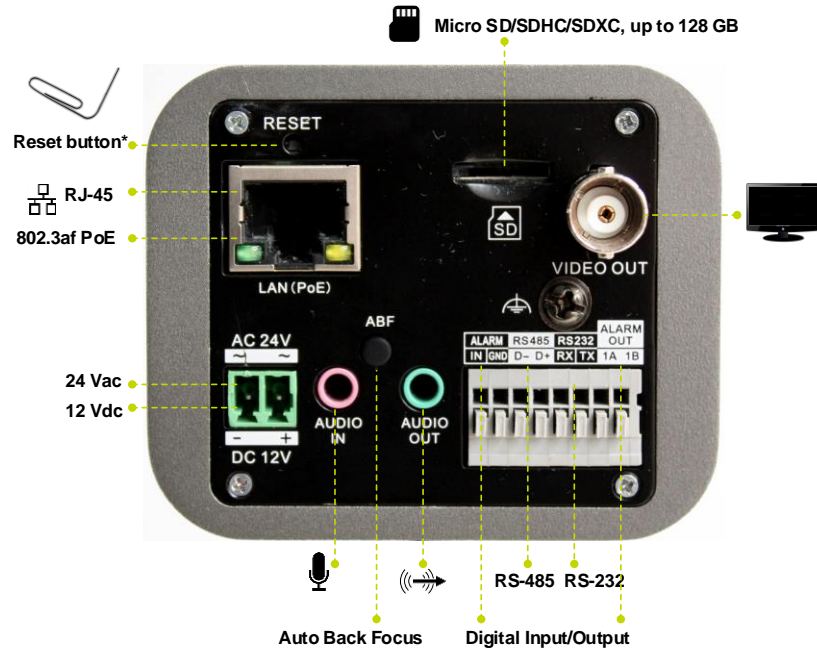
### Mount lens / Monter la lentille



### Mount camera / Monter la caméra

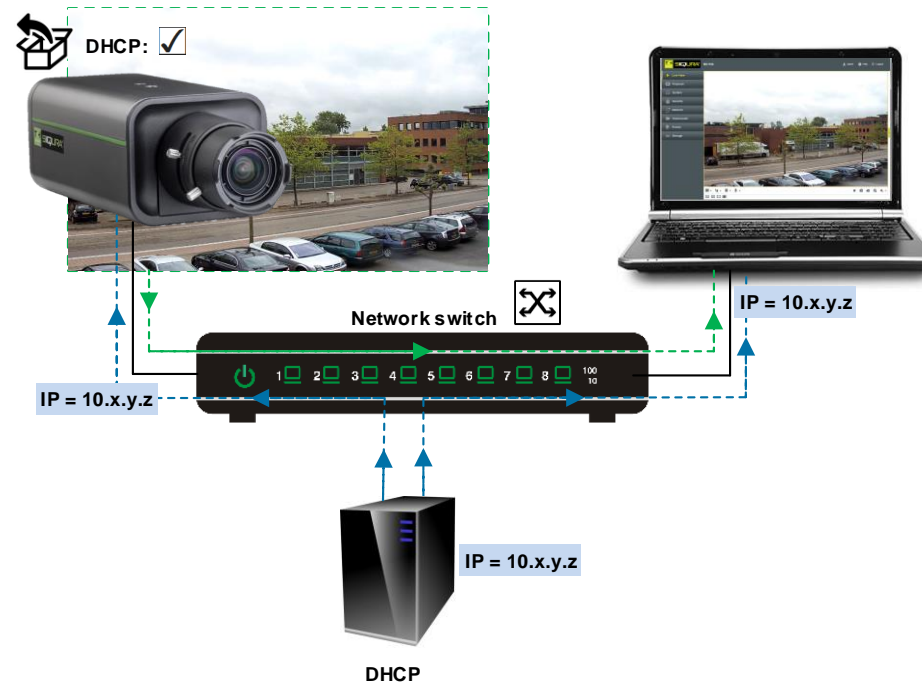


### Connect / Connecter

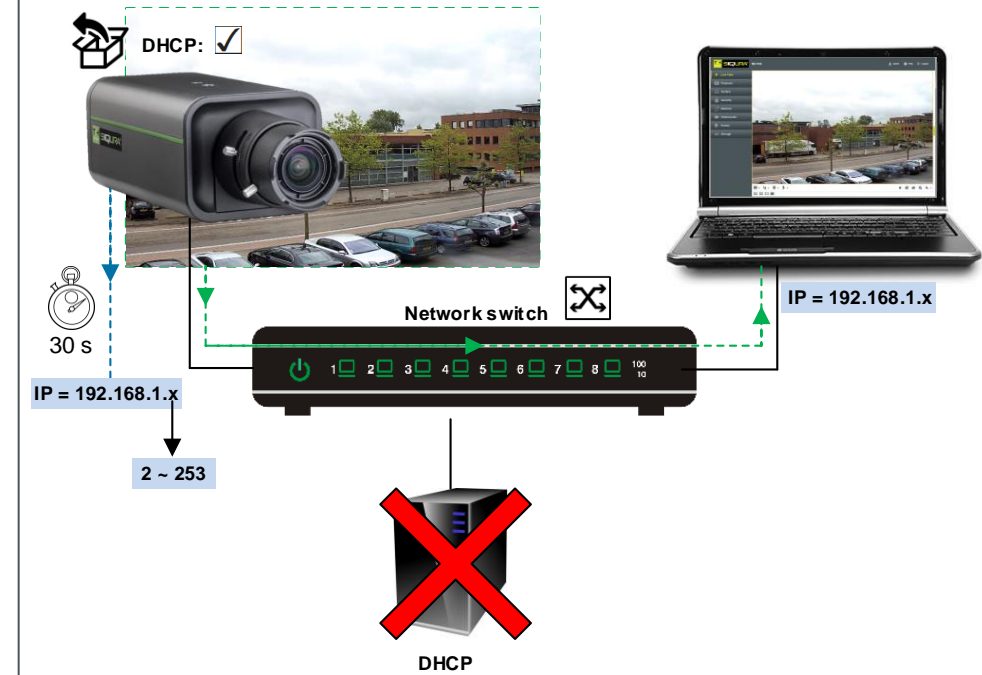


**\*Reset button:** Press and hold for 10 sec. when powering on or rebooting.  
**Warning:** Restores factory default settings, including IP address, user name and password!  
**\*Bouton reset:** Appuyer et maintenir 10 sec lors de l'allumage ou du reboot.  
**Attention:** La remise a zéro usine supprime l'adresse IP et les mots de passe!

### Use DHCP server / Utiliser un serveur DHCP



### Use fixed IP address / Utiliser une adresse fixe



Use Device Manager (see next) to discover the camera on the network.  
Utiliser le "Device Manager (voir ci-après), pour retrouver la caméra sur le réseau.

## Install Device Manager / Installer Device Manager

1

2

3

support-files > Software > Siqura Device Manager

C:\Users\...Downloads\Siqura Device Manager.zip

1103 series cameras require Device Manager version 1.8.1 or later. Replace a previous version of this tool on your PC, if necessary!

Les caméras de la série 1103 nécessitent Device Manager version 1.8.1 ou ultérieure. Remplacez une version antérieure de ce logiciel sur votre PC, si nécessaire!

## Change IP address / Changer l'adresse IP

1

2

3

Change Network Settings 192.168.1.64 BC1103

Current IP address	192.168.1.64
Current Netmask	255.255.255.0
Current Gateway	0.0.0.0
Static IP	<input checked="" type="radio"/>
New IP Address	172.22.250.137
New Netmask	255.255.0.0
New Gateway	0.0.0.0
Enable DHCP	<input type="radio"/>

## Open web interface / Ouvrir l'interface web

1

2

Open Web Page Ctrl+W

Change Credentials in Device... Ctrl+C

Credentials used for Device... Ctrl+U

Change Name... Ctrl+N

Change Network Settings... Ctrl+H

Change Time Settings... Ctrl+T

Identify... Ctrl+I

Backup Settings... Ctrl+B

Restore Settings... Ctrl+R

Upgrade Firmware... Ctrl+F

Capabilities... Del

Remove device from list Del

## Set password / Créer le mot de passe

Administrator / End User  
Administrateur / Utilisateur

Add user

User Name: admin

Level: Administrator

Password: [masked]

Confirm: [masked]

Set a strong password!  
Créez un mot de passe fort!

qwerty1234



x6W@oM0a!9#F



For more information about user accounts and passwords, see User Manual.  
Pour plus d'informations sur les comptes et mots de passe, voir le manuel d'utilisation.

## View live video / Voir la vidéo en direct

Live View

05-26-2016 Thu 14:34:31

Camera 01



## Adjust video / Régler les paramètres vidéo

1

2

3

4 (Optional)

Focus -

Focus +

Lens initialization

Auxiliary focus

Adjust focus

Note:

- Auxiliary focus = Auto back focus (push to focus)
- Focus +/- = Manual back focus.